

Cemetery & Cremation Supplies

DEVICES • STRAPS • BRUSHES • TOOLS



eckels
Since 1895

Tel: 1.800.265.8350 • Fax: 1.800.914.1141 • www.eckelsandcompany.com

CREMATION EQUIPMENT

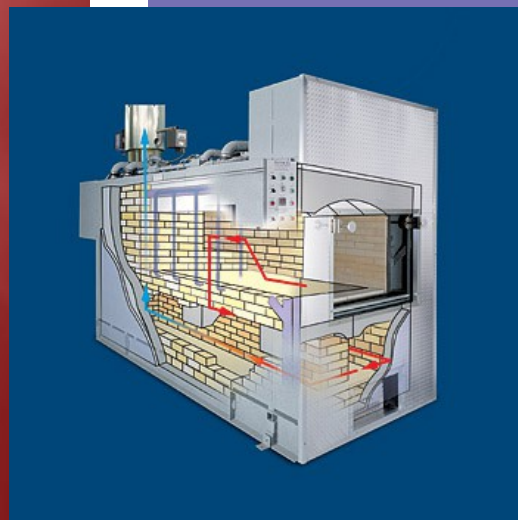


Polar Pak 3 - Body Cooler

Economical and trouble-free, this cooler plugs into a standard 120-volt outlet.

Standard features include:

- Self-contained refrigeration system
- On/Off switch
- Removable anodized aluminum shelves for easy cleaning
- Adjustable thermostat and thermometer.



Power Pak II *The New Standard*

2 hours or Less Cremation Time
Up to 4 Cremations in 8 Hours

Features:

- Quiet Operation
- Stainless Steel Stack
- Retrieval System
- Self-locking, self-sealing loading door
- Easy-to-use operating controls
- Complete combustion of smoke and odor
- Also Available: Power Pak I, Power Pak III & Ener-Tek IV



Not all products are shown. For other product inquiries:
Tel: 1.800.265.8350 Fax: 1.800.914.1141
www.eckelsandcompany.com

eckels
Since 1951

CREMATION EQUIPMENT



LT-1B Lift Table

Constructed of heavy-duty welded steel with a high-strength industrial finish. The tables can carry up to 600 pounds. Also available with weight scale: #LT-1BS



ECP-200

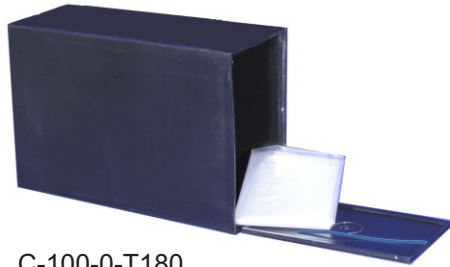
Electric Cremated Remains Processor
Reduces below 200 cubic inches, guaranteed
30 seconds or less processing time



VPS-1 Ventless Processing Station

This innovative system recovers dust when transferring cremated remains into the processor and when packaging, creating a safer, cleaner work environment. Eliminates the need for outside venting. Mounted on wheels makes housekeeping easy. Designed for ECP-200.

CREMATION SUPPLIES



C-100-0-T180
Temporary Container (CS/36)
8-3/4" H x 5-3/4" W x 3-1/4" D



C-100-0-M185C
Cardboard Mailer (CS/48)
Interior fits T180 Temporary Containers



C-100-0-T190
Oversize Temporary Container (CS/36)
8-1/4" H x 6-1/4" W x 4-1/4" D



C-100-0-M195C
Oversize Cardboard Mailer (CS/48)
Interior fits T190 Temporary Containers



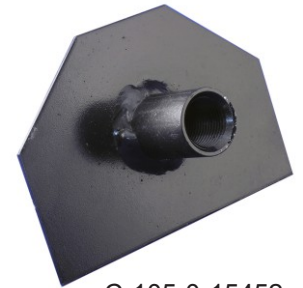
Temporary Scattering Urn
MDF Wood with Gray Finish
180G



C-105-0-011917
Face Shield



C-100-0-107
Cremation Rollers
2 1/2" Dia. x 21 1/2" L
50 per case



C-105-0-15452
Stoking Tool
5"W x 3 1/2"H



C-105-15451
12" Rake Head Only



C-105-0-011906
Thermal Leather Gloves
Cotton-lined leather gloves
Heat resistant and flexible
One Size Fits All (13")



C-100-0-IDTAG
Cremation ID Discs
Quantities: 250, 500, 1000
.035 Stainless Steel Discs



C-105-0-751812
12" and 6" Metal Alloy Wire Brush
Reduces abrasion on floors
and walls of cremation chamber
Connects to 1/2" pipe thread or 3/8" conduit

Not all products are shown. For other product inquiries:
Tel: 1.800.265.8350 Fax: 1.800.914.1141
www.eckelsandcompany.com

eckels
Since 1951

CREMATION SUPPLIES



Thermocouple Complete
Available in 18" or 24"
C-105-0-174440 or C-105-0-1744404
Thermocouple Insert Only (not shown)
Available in 18" or 24"
C-105-0-17444421 or C-105-0-1744301



Placement Tool
C-105-0-15405

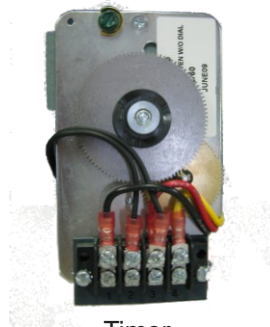
Power-Vak Vacuum System
C-105-0-0221



Flame Resistant Intermediate Filter - Hose Storage Cage
30' Electrical Cord - Accessories Included



ECP 200 Replacement Blade
C-105-0-0003



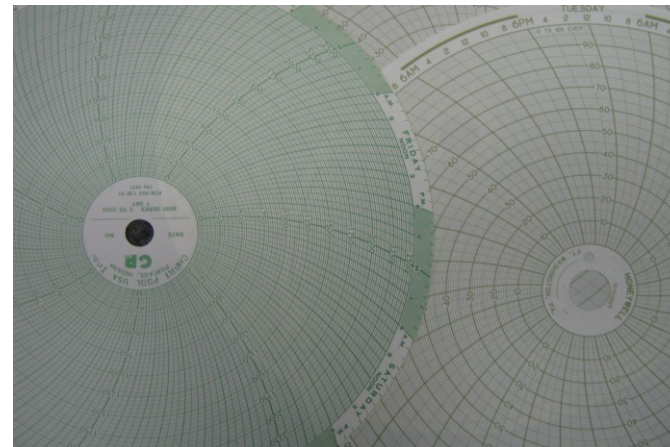
Timer
C-105-0-17455
120V, 409AS



Cremation Pan
C-105-0-155010 - 20"
C-105-0-15497 - 30"



Magnet
C-105-0-002



24-Hour Chart Paper C-105-0-170720
#24001660009

Honeywell Chart Paper C-105-0-170719
#1707190070
Various Chart Paper Types are Available

CEMETERY DEVICES



Stainless Steel Cemetery Lowering Device
C-114-0-5502S



Stainless Steel Infant Lowering Device
(Also Urn Lowering Device)
C-114-0-100D



Stainless Urn Lowering Device
(Also Infant Lowering Device)
Accessories Not Included
C-114-0-100D



Streamliner

This mobile stand and casket carrier is ideal for fast and easy grave side set-ups. It provides safe mobile casket handling from the hearse to the grave.



Casket Placer
C-114-0-PLC19



Cemetery Casket Carriage
Shown in Bronze (061-884)
Available in Silver (83), Bronze (84),
Gold (85), Blue (86) & Onyx (87).

Not all products are shown. For other product inquiries:
Tel: 1.800.265.8350 Fax: 1.800.914.1141
www.eckelsandcompany.com

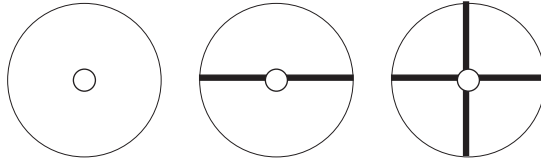
eckels
Since 1951

CEMETERY SUPPLIES

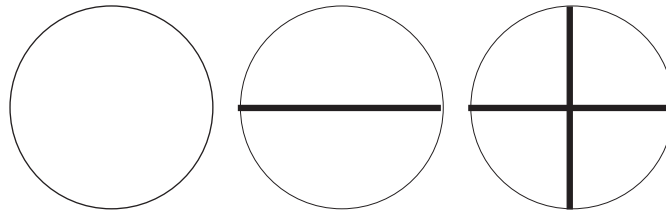
Lot Markers



Perma-Mark #35 (3 1/2" Dia)
Max. 1 Letter, 3 Numerals per quadrant
C-112-0-035



Perma-Mark #45 (4 1/2" Dia)
Max. 1 Letter, 3 Numerals per quadrant
C-112-045



Norman Markers CS/25
C-100-0-101



Lowering Device Straps, Pair

C-114-0-791L - 20ft
C-114-0-793L - 25ft



Straps (4 short)

C-114-0-791S



Safety Straps, Pair

C-113-0-759



Hand Straps (pair)

C-113-0-109



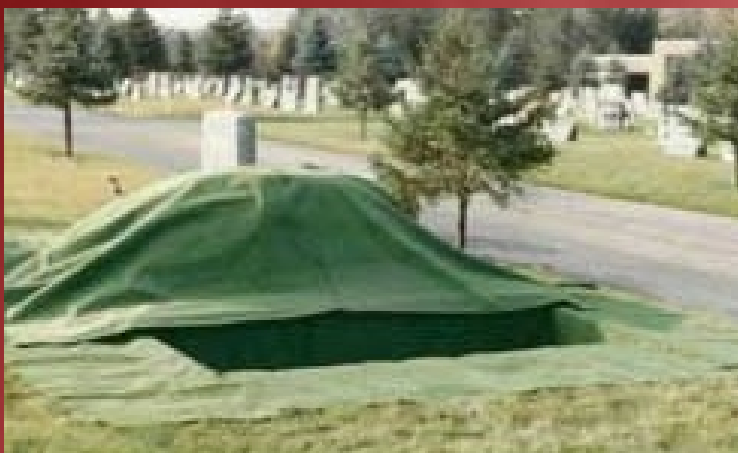
Easy Up Tent Complete
C-113-0-200



Available in Green, White, Blue & Burgundy
Sizes: 10x10, 10x15, 10x20

Walls for tents also available

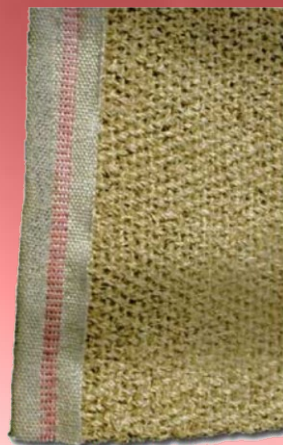
Grass Set 2- 6ft x 8ft
C-112-0-600 2- 6ft x 14ft
2- "T"-shaped



Coco Matting

C-103-0- 01

Available in 12', 15', 20'



X-Tenzo Seating System

Available in 2, 3, 4, 5 & 6 chair systems

C-116-0-3300903

X-Tenzo Chair Set with Case

C-116-0-3300



eckels
Since 1895